

MISTING AND LIVESTOCK

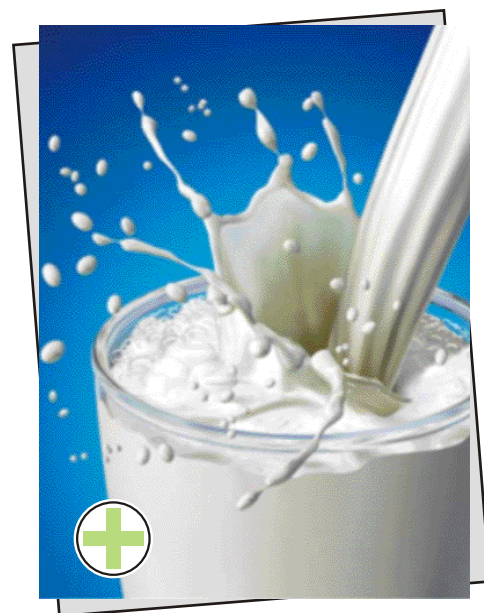
Birds and animals, like humans, are happier and more productive when comfortable. Misting reduces heat stress and increases productivity.

Misting provides heat stress relief for all categories of **poultry**. Mortality is dramatically reduced. Stress-free broilers continue to eat and grow. Layers produce more eggs. Breeders are more active and produce higher quality eggs.

In the **hog** world, misting increases the farrowing sow's appetite, which improves milk production. This, in turn, boosts the litter weight at weaning, increases the size of future litters and allows the sow to go back into heat quicker. Cool conditions increase sex drive and sperm count, as well as sexual development.

Cattle are also subject to heat stress. This condition can affect milk production, weight gain and breeding cycles. The misted cow is the contented cow is the productive cow.

Mother Nature has an unpleasant way of telling humans and **horses** to slow down when working in extreme heat, and if those warnings go ignored for too long, disaster can result. But races and heats and rounds and shows are held in all kinds of weather, and if we want our horses to do their best while competing in the heat, then we have to do our best to condition and acclimate them to withstand high temperatures.



MINIMAL OPERATING COSTS

Easy installation, minimum maintenance and low energy consumption. There are many proven cost-effective uses for evaporative cooling that make it the preferred choice. The installation and operating cost of our systems can be much lower than traditional air conditioning.

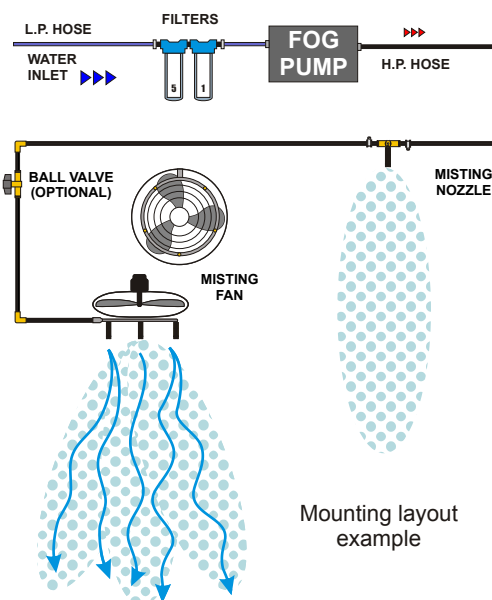
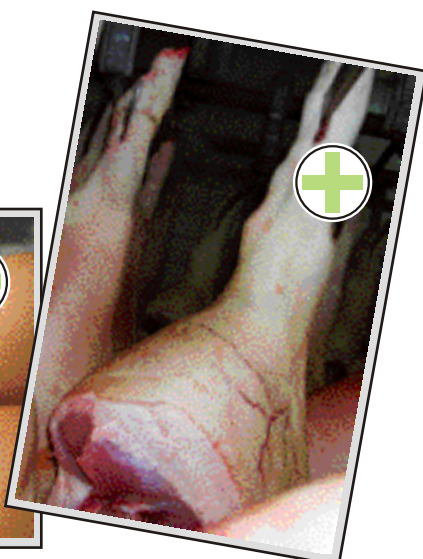
“The system cools the inhabitants without creating a wet environment.”

BENEFITS

- Increases egg, milk, and meat production
- Reduces animal heat stress
- Extends breeding period and growth rate
- Results in cleaner, drier surroundings
- Dust suppression
- Odor control
- Reduces water and energy consumption



MORE Weight
MORE Health
MORE Milk
MORE Meat
MORE Eggs



Mounting layout example

Comparison to phase-change (standard) air conditioning

Less expensive to install

Estimated cost for installation is 1/8 to 1/2 that of refrigerated air conditioning

Less expensive to operate

Estimated cost of operation is 1/4 that of refrigerated air. Power consumption is limited to the fan and water pump vs. compressors, pumps, and blowers.

Fresh air

The constant stream of air from intake to vent through the building freshens the air in the building.